

The Getaway 3

153sqm Living area

**Premium spec Full Kit \$119,897 inc
GST and delivery in the Perth Metro
area.**



The Getaway is a popular design for owner Builders and Builders alike due to it's simplicity of design, ease to build and it's suitability to the wide range of contemporary claddings on the market today.

We now offer a three bedroom, two bathroom version with the same design flexibility Straight Edge Steel Frame Homes is known for.

All three bedrooms feature built in robes with sliding doors, and generous glazing to encourage the use of natural light.

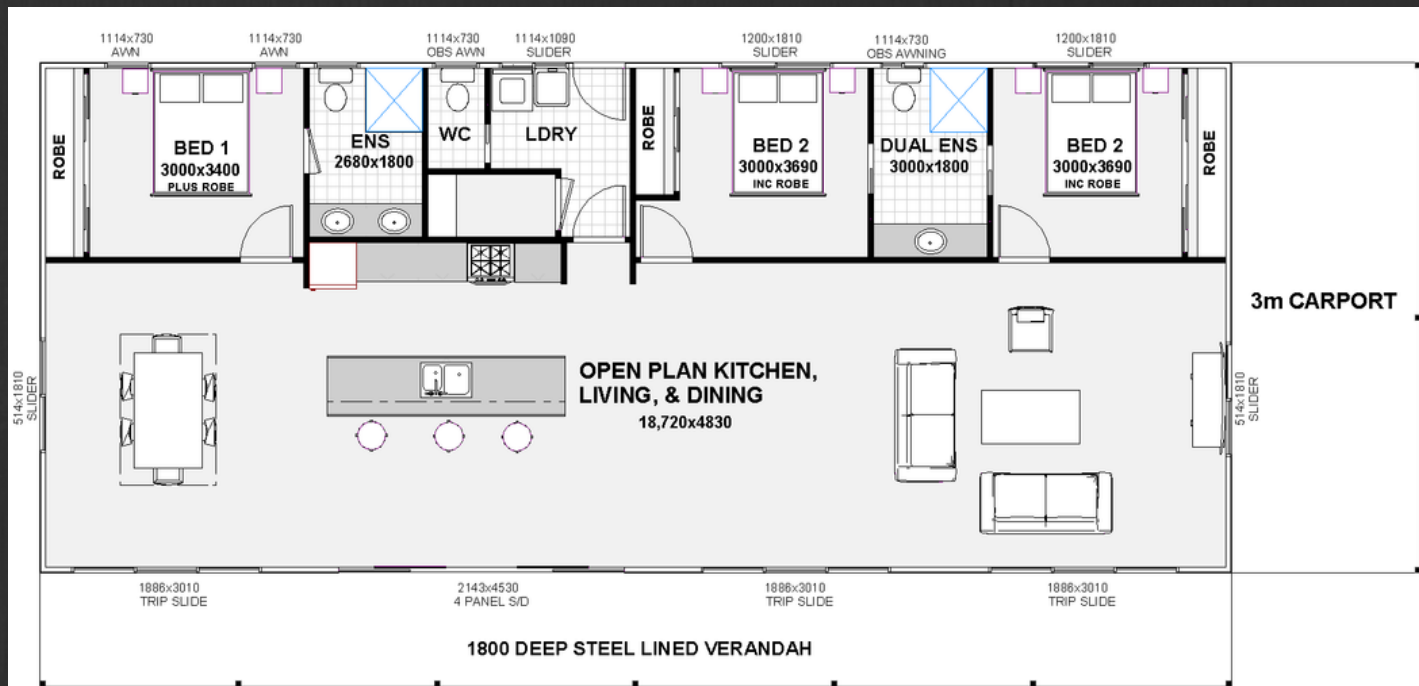
This home is available in Premium Specification with 2.7 ceilings and Colorbond roof sheeting, Hardies Primeline Chamferboard cladding and Scyon Easylap for the end elevations. Other cladding combinations are available.

The Getaway 3

153sqm Living area

Premium spec Full Kit \$113,387 inc GST and delivery in the Perth Metro area.

The Floorplan



Key Inclusions

- Available with 2400 ceilings to the bedrooms and wet areas & raked ceilings to the living areas
- 1.8 m wide fully lined steel verandah
- Fully Lined carport
- Colorbond or Zincalume roofing, gutters, fascias and accessories
- Hardies Primeline Chamferboard, Colorbond and or Scyon Easylap external cladding
- Solid Core Laundry Door in hardwood frame with combination deadlock door furniture
- Quality aluminium windows and sliding doors (BAL assessment may affect pricing)
- Plasterboard internal linings to the walls and ceilings
- Cornices, skirting boards, and 450 deep robe shelving plus one chrome hanging rail
- JDS Regal internal door frames
- Flush panel Redicote internal doors with satin chrome door furniture
- Engineer certified shire plans, Energy Assessment and CDC Approval for a fast shire turn around



Why Build using TRUECORE® steel

More and more homes are being built with steel frames – in particular, TRUECORE® steel made by BlueScope Steel. Research conducted by BlueScope Steel has shown that homeowners prefer the lightweight benefits delivered by steel framing. And demand is growing.



Builders, too are finding the benefits of building with framing made from TRUECORE® steel far out-weigh the benefits of other frame materials. In particular, the environmental benefits and steel's ability to "touch the Earth lightly". The relative lightweight of steel framing, combined with its design versatility and flexibility, means a steel-framed house can be built with minimal site impact. This is especially apparent on sloping and difficult sites where it can be used in conjunction with suspended flooring systems, reducing the need to cut into the site and thus leaving a much smaller imprint. And because steel frames are fabricated off-site to exact specifications, there is minimal cutting and wastage onsite - making for a cleaner building environment.



GENERAL INCLUSIONS

1. Architectural drawings, site plan, engineered working drawings, and ABSA Energy Assessment as required by your local authority.
2. Site sign to display the builders name and licence number.
3. Detailed "How to" layout drawings for wall and roof frames, columns, floor systems, and wet area wall claddings.
4. All bolts, nuts, washers, screws, rivets, nails, sealants required to complete your new home.
5. Electric screwdriver with sockets and driver bits, clamps, and safety goggles. Yours to keep!
6. Engineered prefabricated Hi-Tensile steel wall frames (2700 ceiling height) numbered for easy matching to the drawings supplied.
7. Engineered steel roof trusses and ancillary sections labelled for easy identification and placement.
8. Steel roof and ceiling battens, and bracing materials.
9. 6.5mm Insulblue roof insulation plus R4 Insulation Batts for the ceiling area.
10. 6.5mm Insulblue exterior wall insulation plus R2.0 Insulation Batts.
11. Colorbond corrugated roof sheeting with matching gutters, fascias, barge cappings and flashings as required.
12. Zincalume Downpipes and brackets.
13. All required angles and fixings to secure any component.
14. Fibre cement sheeting for eaves, verandahs or carports to suit individual designs.
15. Quality aluminium windows and sliding doors with matching fly screens.
16. "Hardies Primeline Weatherboards" or Colorbond external wall cladding with clips, joiners, and corner finishes.
17. Panel carve solid core front door with pre-assembled hardwood frame, weather seal, and quality door furniture and deadlock.
18. Solid external flat panel rear door with pre-assembled hardwood frame, weather seal and keyed alike locks.

INCLUSIONS - ADD THESE TO COMPLETE THE "FULL KIT"

1. 10mm Plasterboard internal linings, 75mm Cove cornice, adhesives and all finishing materials.
2. Moisture resistant MDF skirting boards.
3. Jarrah architraves for the front and rear door frames.
4. One (1) white melamine shelf, hanging rail with dressed timber supports for each built in robe.
5. Four (4) white melamine shelves with supports to linen cupboards.
6. Internal flat panel doors.
7. Internal metal knock-down door frames for easy assembly.
8. Quality internal door furniture.

