



MULTIGEN 2

294sqm Including the Garage

Full Kit \$223,777 inc GST and
delivery within 50km of the
Perth CBD



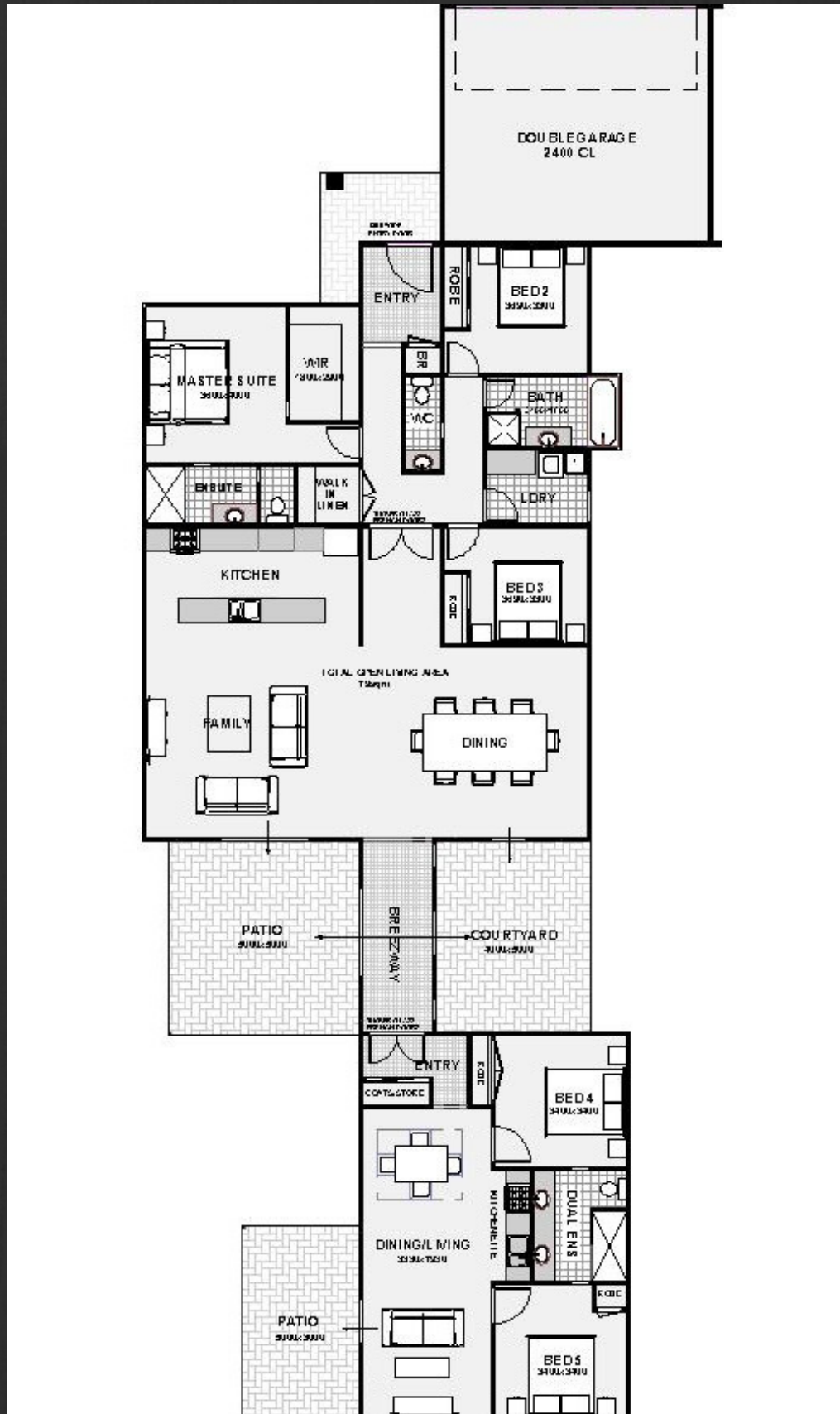
The MultiGen 2 is designed with large or growing families in mind, and offers a three bedroom, two bathroom main residence with a two bedroom ancillary dwelling under the one roof, with both connected by a spacious breezeway.

The master suite is large, with an en-suite and separate toilet using space saving cavity sliders for access.

The secondary bedrooms are both queen size and have close access to a generously sized bathroom, as well as a toilet with room for a wash basin. The kitchen space looks over the open plan family room, and out onto the 25sqm patio area, and with the large 4 panel sliders, this home makes bringing the outdoors inside easy.

Enquire about the MultiGen 2 on 0416 167 553 today.

The Floorplan





Why Build using TRUECORE® steel

More and more homes are being built with steel frames – in particular, TRUECORE® steel made by BlueScope Steel. Research conducted by BlueScope Steel has shown that homeowners prefer the lightweight benefits delivered by steel framing. And demand is growing.



Builders, too are finding the benefits of building with framing made from TRUECORE® steel far out-weigh the benefits of other frame materials. In particular, the environmental benefits and steel's ability to "touch the Earth lightly". The relative lightweight of steel framing, combined with its design versatility and flexibility, means a steel-framed house can be built with minimal site impact. This is especially apparent on sloping and difficult sites where it can be used in conjunction with suspended flooring systems, reducing the need to cut into the site and thus leaving a much smaller imprint. And because steel frames are fabricated off-site to exact specifications, there is minimal cutting and wastage onsite - making for a cleaner building environment.



INCLUSIONS

1. Architectural drawings, site plan, engineered working drawings, and ABSA Energy Assessment as required by your local authority.
2. Site sign to display the builders name and licence number.
3. Detailed "How to" layout drawings for wall and roof frames, columns, floor systems, and wet area wall claddings.
4. All bolts, nuts, washers, screws, rivets, nails, sealants required to complete your new home.
5. Electric screwdriver with sockets and driver bits, clamps, and safety goggles. Yours to keep!
6. Engineered prefabricated Hi-Tensile steel wall frames (2700 ceiling height) numbered for easy matching to the drawings supplied.
7. Engineered steel roof trusses and ancillary sections labelled for easy identification and placement.
8. Steel roof and ceiling battens, and bracing materials.
9. 6.5mm Insulblue roof insulation plus R4 Insulation Batts for the ceiling area.
10. 6.5mm Insulblue exterior wall insulation plus R2.0 Insulation Batts.
11. Colorbond corrugated roof sheeting with matching gutters, fascias, barge cappings and flashings as required.
12. Zincalume Downpipes and brackets.
13. All required angles and fixings to secure any component.
14. Fibre cement sheeting for eaves, verandahs or carports to suit individual designs.
15. Quality aluminium windows and sliding doors with matching fly screens.
16. "Hardies Primeline Weatherboards" or Colorbond external wall cladding with clips, joiners, and corner finishes.
17. Panel carve solid core front door with pre-assembled hardwood frame, weather seal, and quality door furniture and deadlock.
18. Solid external flat panel rear door with pre-assembled hardwood frame, weather seal and keyed alike locks.



INCLUSIONS - ADD THESE TO COMPLETE THE "FULL KIT"

1. 10mm Plasterboard internal linings, 75mm Cove cornice, adhesives and all finishing materials.
2. Moisture resistant MDF skirting boards.
3. Jarrah architraves for the front and rear door frames.
4. One (1) white melamine shelf, hanging rail with dressed timber supports for each built in robe.
5. Four (4) white melamine shelves with supports to linen cupboards.
6. Internal flat panel doors.
7. Internal metal knock-down door frames for easy assembly.
8. Quality internal door furniture.

